



**TECH SLEEVES**  
THE FUTURE IS NOW



## TECH CARBON+ PNEUMATIC ADAPTER

The Tech Carbon+ pneumatic adapter offers users the most **advanced high modulus carbon press adapter** on the market. The adapters are constructed to accommodate **high printing speeds** whilst mitigating against overall press bounce. The Tech Carbon+ pneumatic adapters incorporates the highest quality of materials on the back of years of research, development and scrutiny within the press room under a wide range of testing procedures.

These adapters when combined with the Tech Sleeves range of printing sleeves brings our customers simply the **most stable and best end print results**.



### PRECISION WINDING TECHNOLOGY

The **Tech Carbon +** adapter from Tech Sleeves features precision winding technology to guarantee a **perfectly balanced sleeve** with exceptional dimensional accuracy.

The winding coupled with the **premium grade carbon fiber / resin mix** is what makes the Tech Carbon + the worlds best pneumatic press adapter.

### CUSTOM UNIVERSAL SEAL

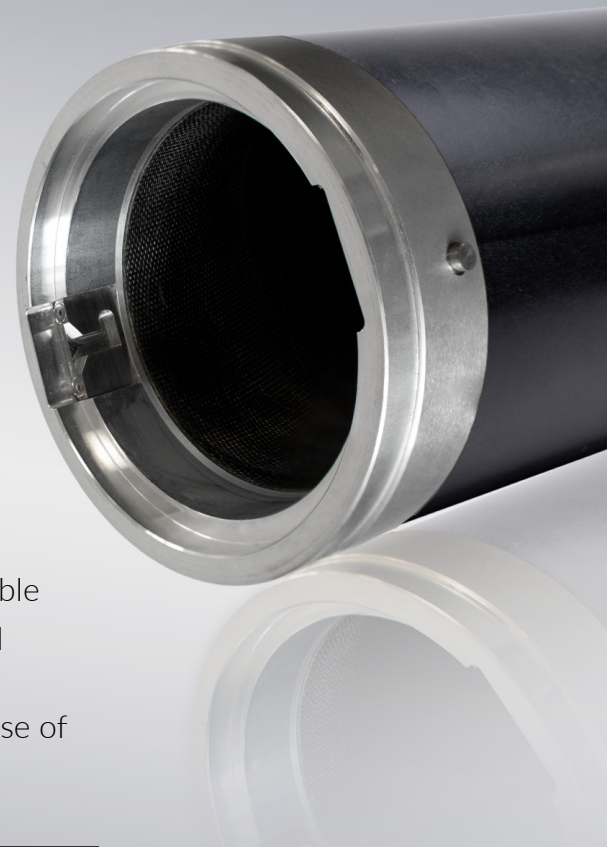
The **Tech Carbon +** adapter uses a custom universal seal to ensure zero air escapes between cylinder and adapter. This seal **maximizes air pressure** to assist in the loading and unloading of flexo sleeves. This custom seal additionally **increases the health and safety** to the operator preventing spray from dirt and ink residues when sleeving.



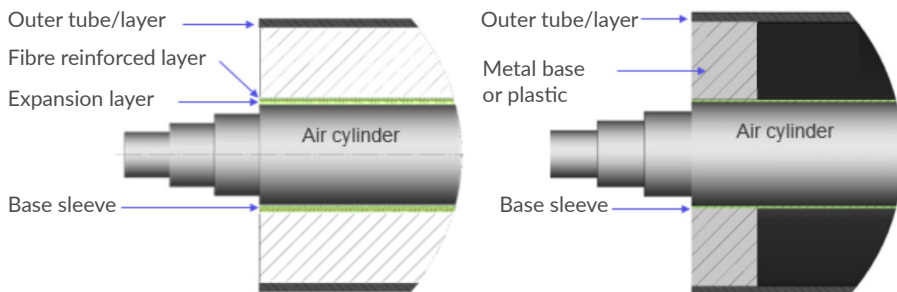


## TECH CARBON+ PNEUMATIC ADAPTER ADVANTAGES

- The Tech Carbon+ offers the stiffest pneumatic adapters on the market
- The Tech Carbon+ pneumatic adapter guarantees no air escape between the adapter and air mandrel
- Guaranteed perfect register accuracy with the registration additionally being quickly and easily when needed interchangeable
- The Tech Carbon+ engineered bridging system allows minimal contact between the air mandrel and adapter
- The Tech Carbon+ offers the lightest adapters available for ease of handling between jobs



## TECH CARBON + DIFFERENTIATING BUILD-UP



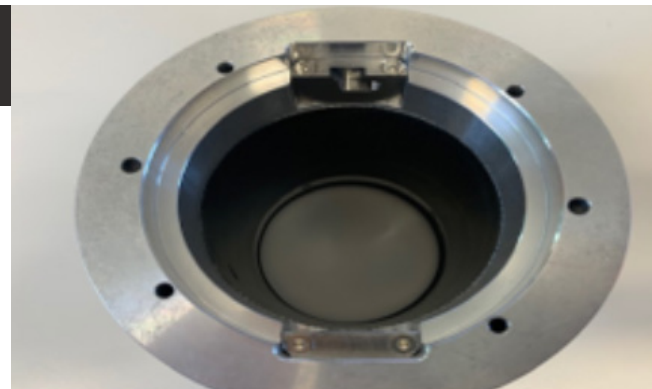
Comparing to conventional pneumatic adapters the Tech Carbon + build up guarantees a **lighter, stiffer and more durable carbon press adapter** which creates;

- Less bounce
- Less deflection
- Low frequency at high speeds
- Easier handling
- No corrosion
- Longer life span

## TWO STAINLESS STEEL NOTCHES

The Tech Carbon + pneumatic adapter is equipped with airholes to give safety to the operator in the case of pressure build up in press

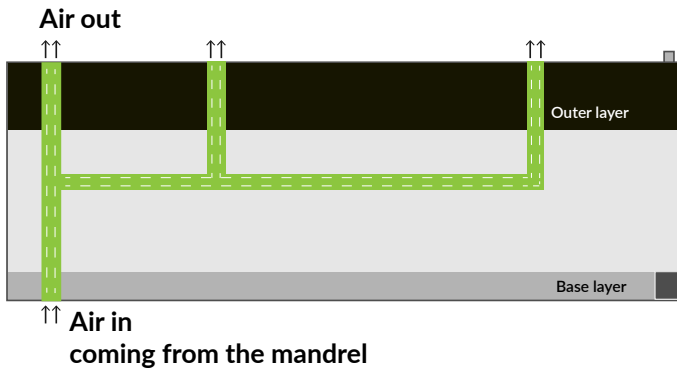
The Tech Carbon + pneumatic adapter is supplied with a **second stainless steel notch** to allow quick replacement if the primary notch was to become damaged.



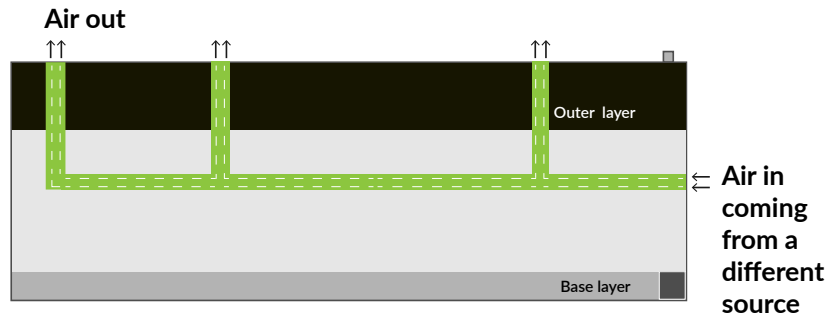


# AIR SUPPLY SYSTEM

## Air-through



## Separate air



Supported systems: Air hole system or ball valves

# TECHNICAL SPECIFICATIONS

<b>MINIMUM POSSIBLE FORMAT JUMPS</b>	10 format jumps (Ø 31,831 mm)
<b>RUN OUT</b>	0,015 mm
<b>LENGTH</b>	650 mm - 1950 mm
<b>DIMENSIONS</b>	1/4 Pitch Gear/ 1/8 Pitch Gear, 10 Diametral Pitch Gear
<b>ASSEMBLY</b>	On pneumatic or hybrid shafts
<b>AIR PRESSURE</b>	6 - 10 bar
<b>AIR VOLUME</b>	Min. air volume 12 litres/sec.
<b>DIAMETER TOLERANCES</b>	≤ Format 700 (Ø 216,567 mm) +0,015 mm / +0,000 > Format 700 (Ø 216,567 mm) +0,018 mm / +0,000

### POSSIBLE OUTER FORMATS\*

#### MIN. OUTER

Stork	390 (Ø 117,891 mm)
Pitch Gear:	15,375 (Ø 117,958 mm)

#### MAX. OUTER

Stork	1400 (Ø 439,134 mm)
Pitch Gear:	55 (Ø 438,329 mm)

### POSSIBLE INNER FORMATS\*

#### MIN. INNER

Stork	290 (Ø 86,060 mm)
-------	-------------------

#### MAX. INNER

Stork	500 (Ø 152,905 mm)
-------	--------------------

### DIAMETER TOLERANCES

Electrically conductive in accordance with ATEX 2014/34/EU

Wear resistant with 90 Shore D hardness

Rz 4-8 µm